

## Expanded Functionality

Now available is software version 3.0 for the turboIP<sup>®</sup> Performance Enhancement Proxy (PEP). This release provides significant new features and further enhances this powerful acceleration solution. Below is a summary of the new features.

## Selective Acceleration

This new functionality provides a mechanism of bypassing acceleration on user-specified parameters. It essentially provides a method of Quality of Service (QoS) for IPv4 datagrams that are received on the local area network (LAN) interface and forwarded to the wide area network (WAN) interface.

### Rules

As with any type of QoS, rules are established to filter and process traffic based on specific characteristics. Up to 255 rules can be applied.

The filter characteristics include:

- The source and destination IP addresses and subnet masks
- The protocols – TCP, UDP or “any”
- The TCP or UDP source and destination port(s)

The rules determine how traffic is handled – either all packets matching the rule are dropped or QoS parameters are applied, specifically:

- Priority Level - Specifies precedence for sending data on the WAN interface (eight levels are available)
- Maximum Data Rate - Specifies the maximum amount of data that matches a rule can be transmitted across the WAN interface
- Whether or not to accelerate TCP sessions

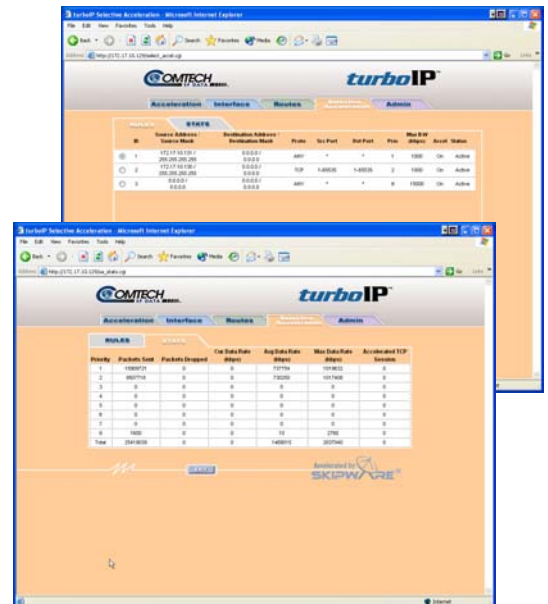
The flexibility offered by Selective Acceleration is particularly beneficial in configurations where certain network applications cannot achieve performance benefits via acceleration, such as some call processing applications.

### Statistics

For each rule applied, turboIP provides statistics on the number of packets sent and dropped, the current, average and maximum data rates plus the number of accelerated TCP sessions.

## Data and Header Compression

Version 3.0 adds the advanced features of data and header compression. This functionality is applicable to accelerated TCP traffic, and is enabled/disabled on a session-by-session basis. When enabled on both ends of the link, data and header compression are applied to all new accelerated sessions. The compressibility of each segment payload is evaluated individually and only those payloads where the impacts would be beneficial are compressed. Enabling data and header compression on turboIP can reduce both bandwidth and transmission time over wide area network links. If disabled, no sessions are compressed.



## SNMP v3

Simple Network Management Protocol (SNMP) is a widely utilized network monitoring and control protocol. Previously, *turboIP* versions 2.5.5.3 and later supported SNMP versions 1 and 2 for network monitoring purposes. With this new release for *turboIP*, SNMP v3 is now supported, including both Access Control and Security Access Control. Additionally, this new release adds read/write capabilities for any configuration parameter, enabling both network monitor and control. Configuration is accomplished via the standard Management Information Base (MIB) or the private MIB. This expanded support offers greater security and expanded flexibility that can accommodate virtually any network environment deploying SNMP.

## Configuration & Management

### Operational Statistics

With Version 3.0, operational statistics indicating the status of *turboIP* systems are now available. Below is a summary of the statistics offered:

- Max Accelerated Sessions
- Max Accelerated Sessions Initiated per Second
- Max Accelerated Sessions Terminated per Second
- WAN/LAN Interface Transmitted Bytes
- WAN/LAN Interface Transmitted Packets
- WAN/LAN Interface Transmitted Packets Dropped
- WAN/LAN Interface Received Bytes
- WAN/LAN Interface Received Packets
- WAN/LAN Interface Received Packets Dropped
- Packets sent at Priority X
- Priority X Packets Dropped
- Priority X Current Data Rate
- Priority X Average Data Rate
- Priority X Max Data Rate
- Priority X Accelerated Sessions
- Packets Dropped
- Session Timed Out
- Session Requests Failed
- Compression Ratio

### Event Log

Also available in this release is an event log. This management feature captures a listing of informational, warning and error events that have occurred.

### Configuration Wizard

For simplified setup of network and SNMP parameters, v3.0 also offers a new configuration wizard.

## Availability

Version 3.0 software is available as a flash upgrade to existing *turboIP* customers at no charge. Please refer to the User Guide for complete upgrade instructions. And, it is standard on all new systems from Comtech EF Data.

If you have any questions about this announcement, please contact your Comtech EF Data sales associate.

e-mail: [sales@comtechefdata.com](mailto:sales@comtechefdata.com)

Voice: 480.333.2200

Fax: 480.333.2540



2114 West 7th Street  
Tempe, Arizona 85281 USA  
Tel: 1 480 333 2200  
Fax: 1 480 333 2540  
[www.comtechefdata.com](http://www.comtechefdata.com)

