

GENERAL HIGHLIGHTS

The Media Router PID Filter (CMR-5930) grooms ASI MPEG transport streams by increasing or decreasing the egress rate and dropping unwanted content from the transport stream.

The PID Filter provides PCR restamping of all time-sensitive content such as video and audio services.

FEATURES

- ASI Input rate is independent of ASI Output rate
- Operates with video, audio and data streams

RELIABLE OPERATIONS

- No hard drive. All firmware boots from Flash resulting in no moving parts
- High availability product
- Embedded CPU and eCOS operating system
- Over 100,000 MTBF

EASE OF USE

- Configuration options: Terminal, HTTP or Telnet
- SNMP MIB II & Private MIB

APPLICATIONS

- Rate reduction or increase of ASI transport streams
- Filtering (removal) of unwanted PIDs / content
- Removes the need for an expensive Multiplexer for single transport stream operation

INVESTMENT PROTECTION

- Upgrade firmware individually via TFTP

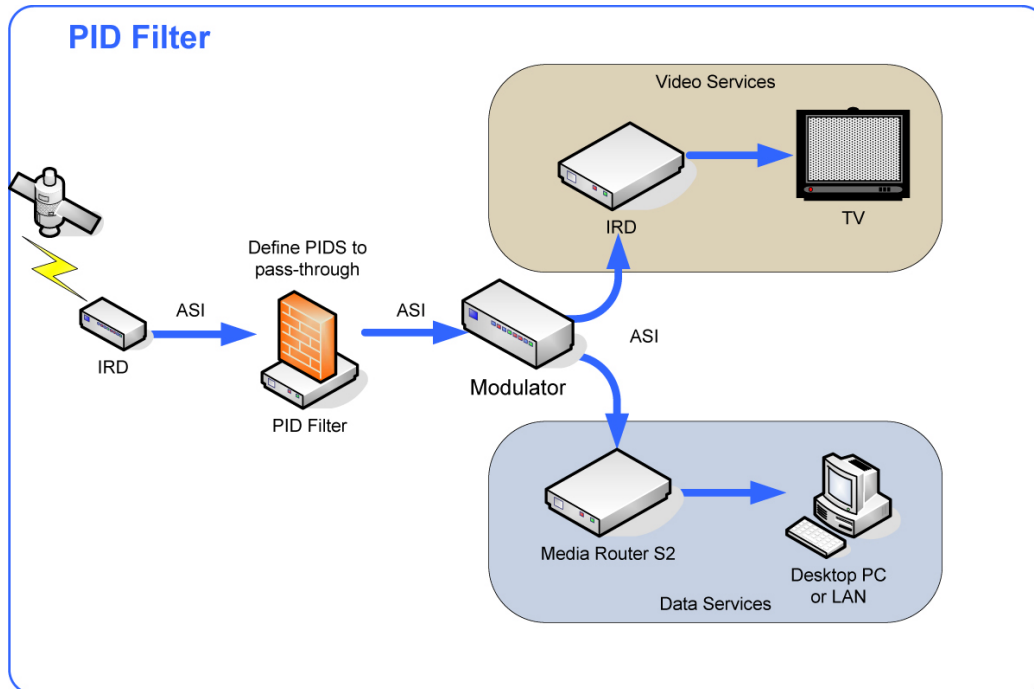
COMPLIANCE

- DVB Data Broadcasting (ETSI EN 301 192)
- PSI Processing (ISO/IEC 13818-1)
- SI Processing (ETSI EN 300 468)
- ASI Interface (EN 50083-9)
- 10/100BaseT Ethernet (IEEE 802.3u)

DISPLAY LEDs

- Power (Blue)
- Ethernet Activity (Yellow)
- Ethernet Link (Green)
- MPE Activity (Green)
- Alarm (Red)

Media Router PID Filter



PHYSICAL & POWER

- 1 RU High
- Length=8 1/8"
- Width= 7 1/4"
- Height= 1 3/4"
- Power Consumption: 6.3 W Max
- Input Voltage: Universal 100-240VAC 47Hz-63Hz
- desktop power supply to 5VDC @ 2.5 A

ENVIRONMENT

- Operating Temperature: 0° to 40°C
- Storage Temperature: -30° to 65°C
- Humidity: 10% to 75% non-condensing

CONNECTORS

- RJ-45: 10/100BaseT Ethernet Interface (IEEE 802.3u)
- BNC: DVB-ASI input
- BNC: DVB-ASI output
- RJ-12: Terminal (RS-232)
- RJ-12: Aux port for serial control

OPTIONAL EQUIPMENT

- Rack Mount Shelf: (TR-1600)
 - 1 RU 19" rack-mount shelf can house one or two CMR-5930 units

