

# CMR-5975 Version 2.5.3 Upgrade Instructions

---

## Introduction

The MR-S2 is enabled to receive an upgrade via Trivial File Transfer Protocol (TFTP) transmission. Comtech EF Data recommends using the Solarwinds TFTP server application (available at <http://support.solarwinds.net/updates/SelectProgramFree.cfm>) for upgrading the product.



***The user will be instructed whether to select Application or FPGA or Redboot code in the download instructions provided by CEFD when new code is provided.***

Once the TFTP server is enabled and the new file (**Application** or **FPGA** or **Redboot**) has been copied to the TFTP server, the procedures outlined in sections A.2 and A.3 may be used to upgrade the unit.

---

## A.1 Web Interface

Access the **Administrative Configuration** menu (Figure A-1):

- a) In the **Update Firmware** section, enter the **Unit TFTP Server IP Address**.
- b) Select **Application** or **FPGA** for the **Image Type** to be upgraded.
- c) Enter a valid username and password in the **Login Required** section (below the **Update Firmware** section) then select **Update**. The software update will begin to download.



***Do NOT power the unit down during the upgrade process.***

- d) When the update is complete, the message “**Press any key to continue**” will be displayed.
- e) Once the unit is upgraded, reset the unit by entering a valid username and password in the first **Login Required** section, then selecting **Reset Unit**.

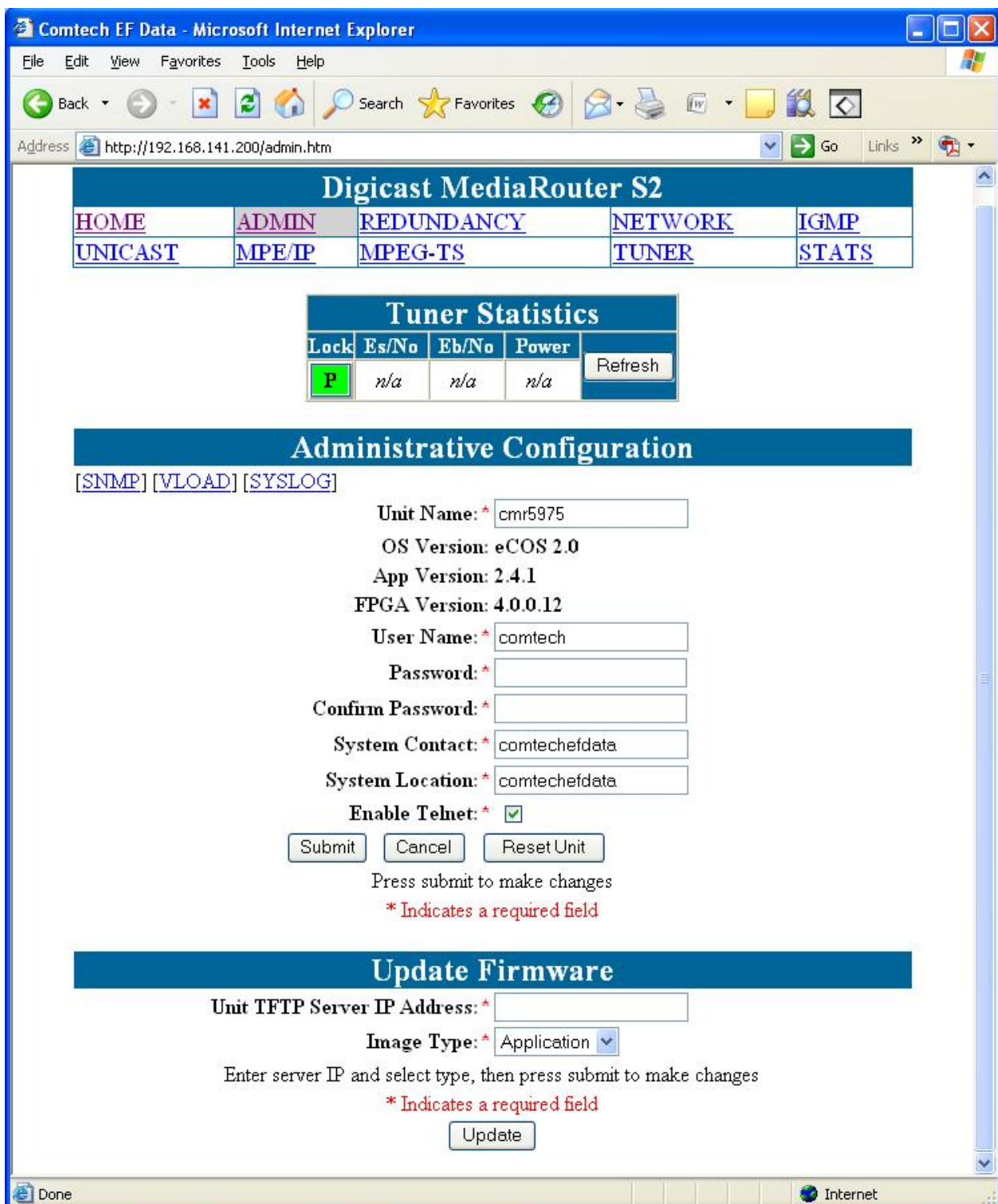


Figure 0-1. TFTP Download (via Web)

## A.2 Telnet or Terminal Interface

Access the Admin Menu (Figure A-2):

- a) Select **(D)** for **Download Image**.
- b) At the “**Image type**” prompt, enter: **1** for **Application** or **2** for **FPGA** or **3** for **Redboot**.
- c) Enter the TFTP IP server address. Once the TFTP IP server address is entered, the software update will begin to download.



**Do NOT power the unit down during the upgrade process.**

IMPORTANT

- d) When the update is complete, the message “**Press any key to continue**” will be displayed (Figure A-3).
- e) After the unit has been upgraded, reset the unit by selecting **(R)** for Reset and ‘**Y**’ to confirm the reset.

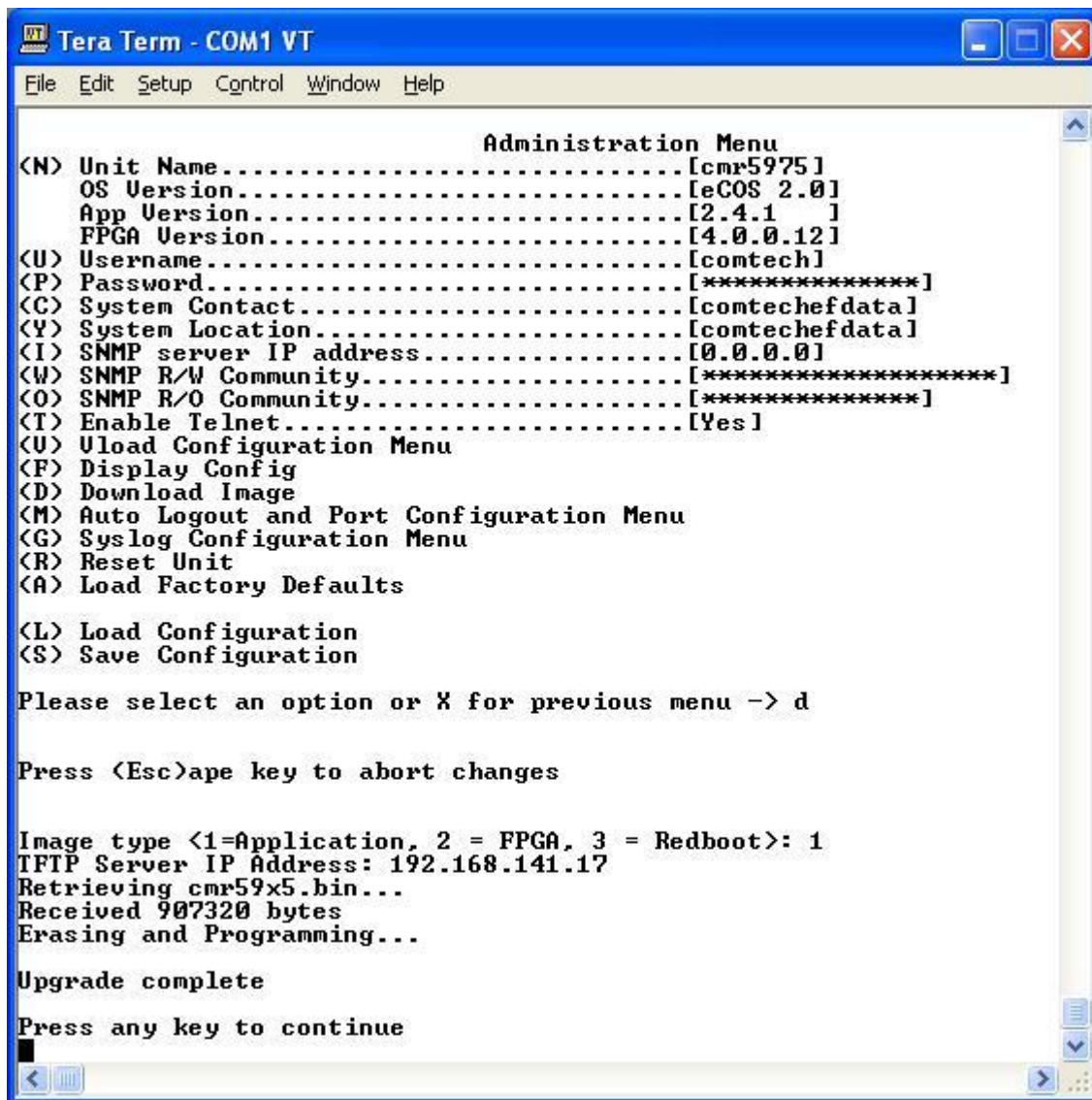
```
Tera Term - COM1 VT
File Edit Setup Control Window Help

Administration Menu
(N) Unit Name.....[cmr5975]
  OS Version.....[eCOS 2.0]
  App Version.....[2.4.1]
  FPGA Version.....[4.0.0.12]
(U) Username.....[comtech]
(P) Password.....[*****]
(C) System Contact.....[comtechefdata]
(Y) System Location.....[comtechefdata]
(I) SNMP server IP address.....[0.0.0.0]
(W) SNMP R/W Community.....[*****]
(O) SNMP R/O Community.....[*****]
(T) Enable Telnet.....[Yes]
(U) Uload Configuration Menu
(F) Display Config
(D) Download Image
(M) Auto Logout and Port Configuration Menu
(G) Syslog Configuration Menu
(R) Reset Unit
(A) Load Factory Defaults

(L) Load Configuration
(S) Save Configuration

Please select an option or X for previous menu -> █
```

Figure 0-2. TFTP Download (via Terminal)



```
Tera Term - COM1 VT
File Edit Setup Control Window Help

Administration Menu
(N) Unit Name.....[cmr5975]
  OS Version.....[eCOS 2.0]
  App Version.....[2.4.1 ]
  FPGA Version.....[4.0.0.12]
(U) Username.....[comtech]
(P) Password.....[*****]
(C) System Contact.....[comtechefdata]
(Y) System Location.....[comtechefdata]
(I) SNMP server IP address.....[0.0.0.0]
(W) SNMP R/W Community.....[*****]
(O) SNMP R/O Community.....[*****]
(T) Enable Telnet.....[Yes]
(U) Uload Configuration Menu
(F) Display Config
(D) Download Image
(M) Auto Logout and Port Configuration Menu
(G) Syslog Configuration Menu
(R) Reset Unit
(A) Load Factory Defaults

(L) Load Configuration
(S) Save Configuration

Please select an option or X for previous menu -> d

Press (Esc)ape key to abort changes

Image type <1=Application, 2 = FPGA, 3 = Redboot>: 1
TFTP Server IP Address: 192.168.141.17
Retrieving cmr59x5.bin...
Received 907320 bytes
Erasing and Programming...

Upgrade complete

Press any key to continue
```

Figure 0-3. TFTP Download Complete (via Terminal)