

Upgrade Procedures

CDD-880 / CDM-840

Release 1.4.7



Revision:

R 2.0

Date:

February 25, 2013

Document ID:

146-022513-R2

Table of Contents

Scope 3

1. Reference Material..... 3

 Step 1: Preloading Modem Firmware 3

 Step 2: Reboot the CDD-880 Hub units to the 1.4.7 firmware 4

 Step 3: Reboot the CDD-880 Hub units to the 1.4.7 firmware 4

 Step 4: Reboot the CDD-840s to the 1.4.7 image 6

Scope

This document describes the procedures and steps for upgrading the Advanced VSAT series modems from current firmware levels to the following:

- CDD-880 1.4.7
- CDM-840 1.4.7

Note: VMS 3.11.1 is required to support 1.4.7.

1. Reference Material

The following CEFD manuals will be useful for more detailed instruction on performing the upgrades:

- CDM-800 Installation and Operation Manual MN-CDM800 Revision 1
- CDD-880 Installation and Operation Manual MN-CDD880 Revision1
- Vload User Guide MN/22117 Revision 1

Step 1: Preloading Modem Firmware

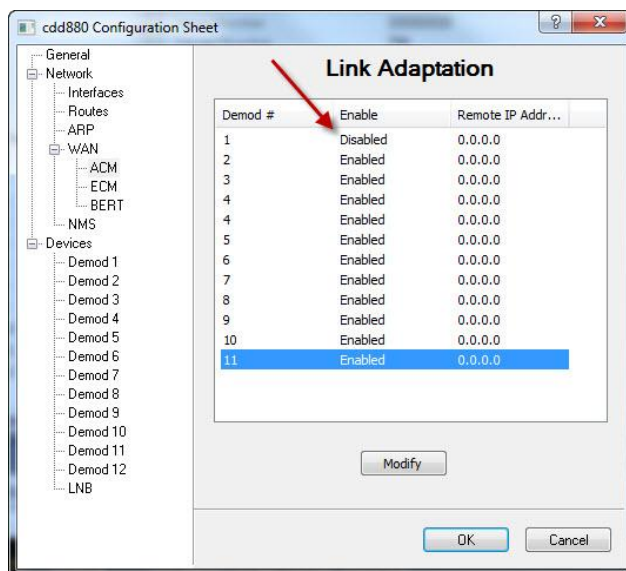
Preload the new firmware versions in the offline slot in each of the modems using Vload. This can be done at any time prior to commencing the maintenance window for the upgrade providing there is sufficient excess bandwidth in the outbound carriers so as not to impact customer SLAs. Select each of the modems and follow the steps shown below.

If you are not acquainted with Vload this procedure is explained in detail under “Saving Images to Units” on page 3-15 of the User’s Guide described under the reference section. Since the latest firmware is compatible with all versions currently running there is no risk of the modems booting up with the new firmware, or having to upgrade a remote that was not online during the maintenance period when the hub is upgraded.

Step 2: Reboot the CDD-880 Hub units to the 1.4.7 firmware

Using the VMS device Configuration, enable Link Adaptation (ACM) control for all available demodulators, IP addresses are not necessary. **Note on 880's with ECM enabled do not enable ACM on demodulator #1.**

Note: Enabling ACM on the CDD-880 allows lock status information to be sent to the associated CDM-840 to improve dSCPC performance. ACM must be enabled on both the CDD-880 and the CDM-840 for Return Link ACM to be fully operational.



Step 3: Reboot the CDD-880 Hub units to the 1.4.7 firmware

Using Vload select each CDD-880, refresh the image and double click on the entry in the display. This will open a window that shows what firmware is located in each slot.

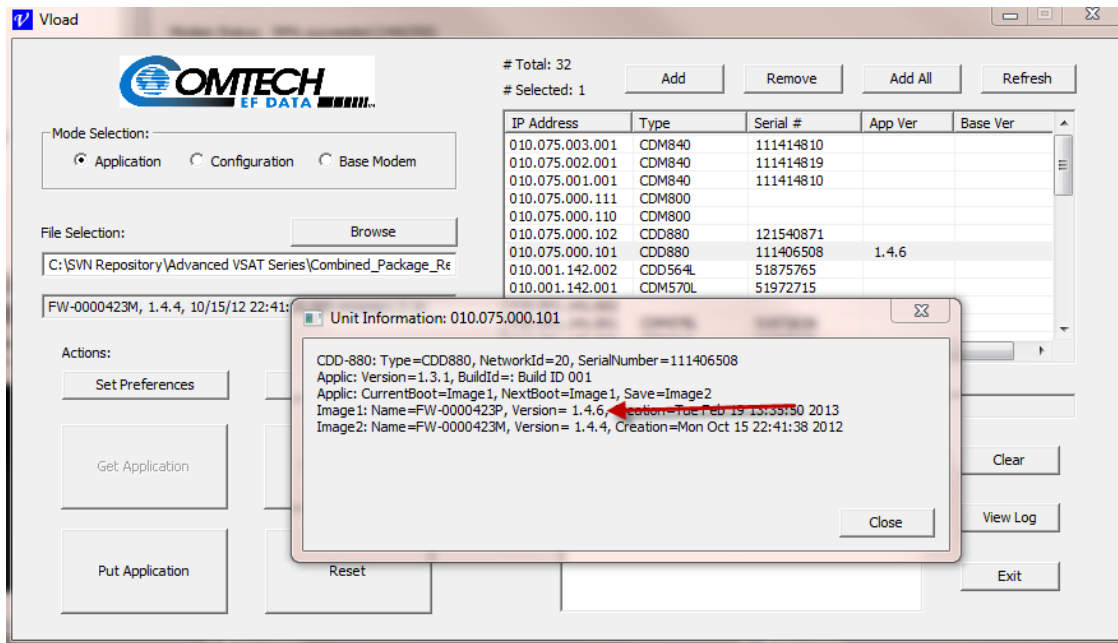


Figure 1 – Verifying the Modem image with 1.4.7 firmware

Once you have determined which image the firmware is in click on Reset on the Vload GUI and Select the Image that has the 1.4.7 firmware. Then Click ok to reboot the box to the new image.

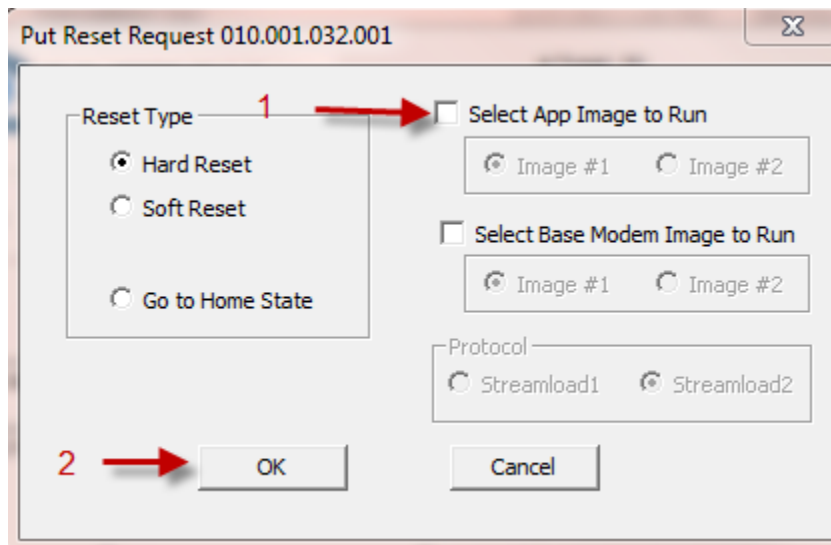


Figure 2 - Selecting the App image and resetting

Before continuing wait for all of the remotes to recover and switch back out.

Step 4: Reboot the CDD-840s to the 1.4.7 image

Using the procedure as shown above, reboot the CDM-840s to the new firmware. Before continuing wait for all of the remotes to recover and switch back out.