

*Directions for upgrading the Gigabit Ethernet Interface Card firmware.*

## 1. Download the Files

- Create a temporary directory (folder) on a PC.
- From the web browser, access the download server using the following flash firmware data files URL:  
[http://206.223.8.10/linksite/flashupgrades/CDM700\\_700L/GBEI/](http://206.223.8.10/linksite/flashupgrades/CDM700_700L/GBEI/)
- Download the correct firmware file to the folder created in Step 1. The bulk firmware for the Gigabit Ethernet Interface Card is:

### **FW12738-.bin**

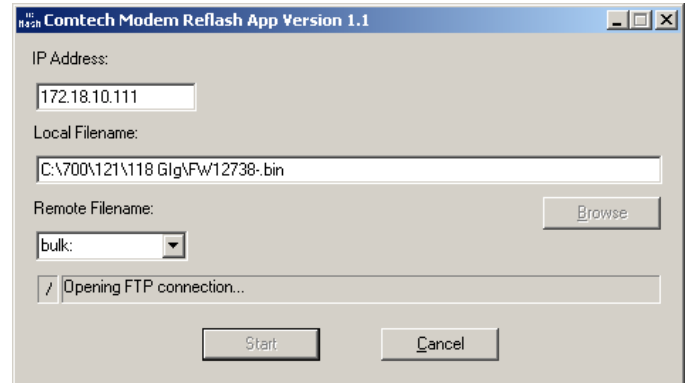
- On the PC, Unzip the files in the temporary folder. At least 4 files must be extracted:
  - FW12738x.bin**, where "x" is the revision (bulk image file)
  - ReleaseNotes\_FW12738\_vxxx.pdf**, where "xxx" is the complete version
  - readme\_vxxx\_GBEI.TXT**, installation notes file
  - CReflash.exe**, use this executable to load the firmware onto the GBEI

## 2. Connect the PC to the Interface

- Connect the client PC to the Gigabit Ethernet Interface Card via an Ethernet hub or a switch, or directly to a PC with a crossover cable.
- Enable the GBEI on the CDM-700/700L to enable the PHY interface on the GBEI.

## 3. Reflash the Unit

- Double-click on **CReflash.exe** to start the Comtech Modem Reflash Application:



- Type the IP Address on the GigE card in the **IP Address** field.
- Select the **Local Filename** to load by either (1) typing the path and filename, or (2) using the **Browse** button to select the file.
- Leave the selection for **Remote Filename** as **"bulk:"**.
- Click **Start**.
- The **CReflash.exe** executable will automatically FTP the filename to the IP address entered and display the progress of the update.

**IMPORTANT: Once the CReflash.exe application has been started, the program will not respond to user input for approximately 5 minutes.**

**DO NOT CLOSE PROGRAM**

**DO NOT REBOOT MODEM**

- When it is finished, you will see **'Successful!'** in the / status line.
- Cycle power to the CDM-700/700L to have the new firmware loaded on the GBEI.
- Verify the version update using the front panel menu.