

Tools Required:

Phillips™ Screwdriver

1. With power disconnected, remove the top lid of the DMD20LBST. Two power supplies are mounted in the front of the unit. The main power supply (which is being replaced) is located in the **front, left-hand corner**.
2. Gently remove the protective cover from the original power supply in the unit. It is secured by silicone sealant.
3. Disconnect the two cables that are connected to the original power supply (one at each end of the supply). **See Figure 1, "Two Cables"**.
4. Remove the four Phillips screws that secure the power supply to the chassis and remove the power supply from the chassis.
5. Place the new supply into the chassis and secure with the four screws.
6. Connect the two cables to the new power supply.
7. Check the new power supply for possible adjustment. To do this, power up the DMD20LBST unit. **CAUTION: AC power is applied to the power supply at this point.**
8. After the unit boots up, navigate the front panel display to the "MONITOR" > "VOLTAGES" > "+5V SUPPLY" display. It should show or be set to **+5.0**. If the display indicates less than 5.0, or more than 5.1, then adjust the **blue potentiometer** on the power supply to achieve a reading of +5.0 in the display (5.0 or 5.1 are both acceptable). **See Figure 2, "5V Monitor"**.



*There is only one potentiometer on the supply. It is **blue** with a **yellow tuning screw** and is located on the front, left corner of the installed power supply as seen in **Figure 3, "Adjust 5V Potentiometer"**.*

Note: Too low or too high an adjustment will NOT damage the unit. The tuning screw is not sensitive, so adjustments are easily made.

9. After completing the check/adjustment, **remove power** from the unit and secure the protective lid to the new power supply using silicone sealant, or an equivalent.
10. Re-attach the top lid to the DMD20LBST.

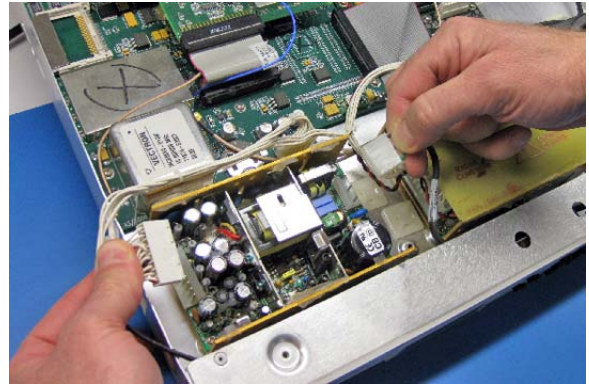


Figure 1. Two Cables



Figure 2. 5V Monitor

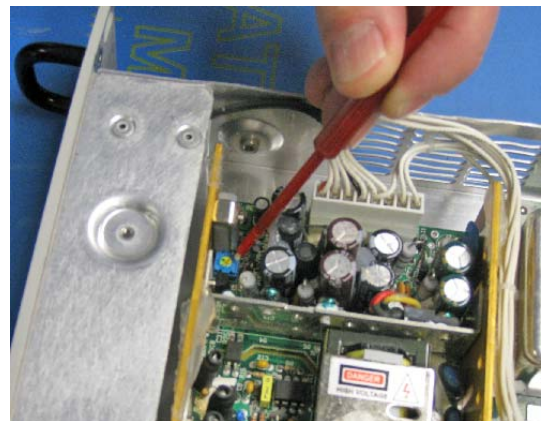


Figure 3. Adjust 5V Potentiometer